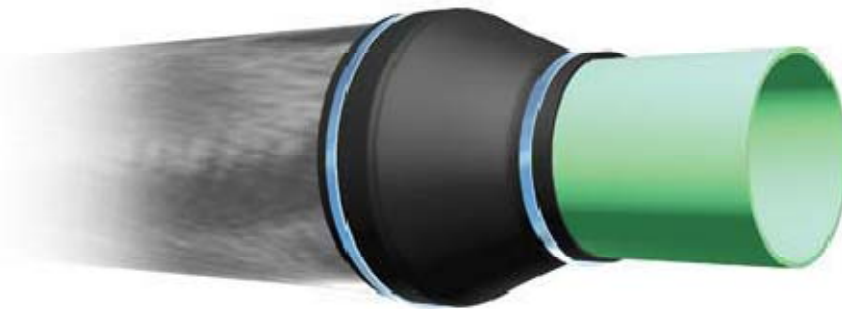


Power Plant Supply Co - Canada Distributors for Pipeline Seal and Insulator PSI



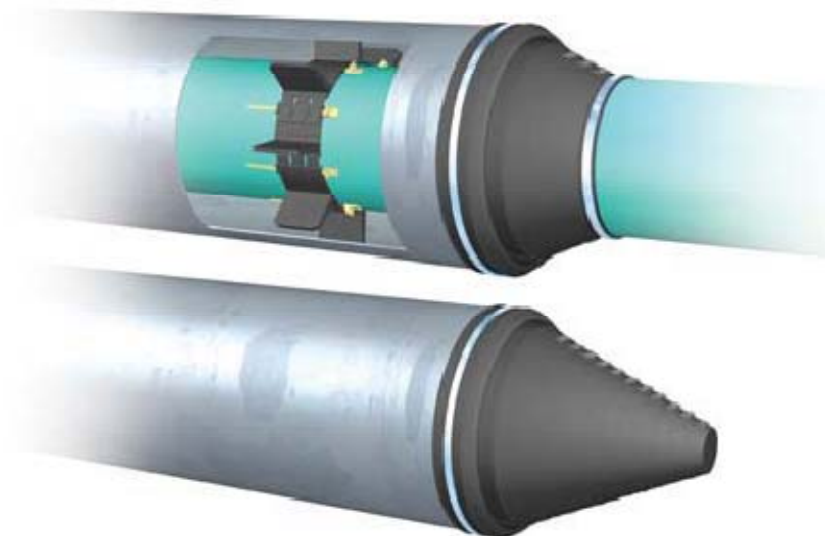
<http://www.powercanadasolutions.com>

Model "C" End Seals Water/Energy Market



Model "C" Custom Pull-on End Seals are designed to accommodate custom carrier/casing diameter combinations. They are made to customer supplied specifications so they may be used for any size casing/carrier differential. Manufactured from 1/8" thick specially compounded synthetic rubber, PSI Model "C" end seals are extremely robust, resistant to wide variations in environmental conditions while eliminating the possibility of foreign material entering the opening between carrier and casing pipes.

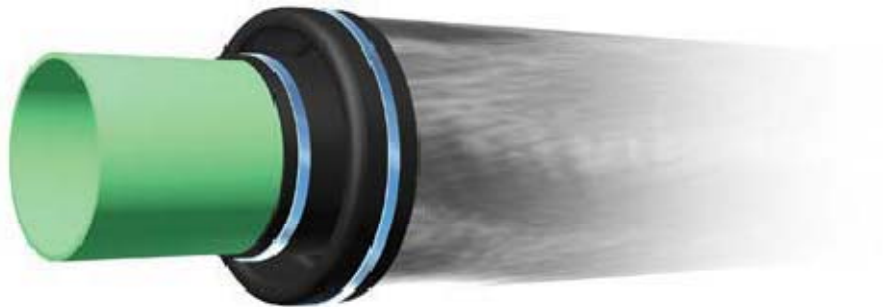
Model "R" End Seals and Night Caps Water/Energy Market



ONTARIO/Quebec 416 752 3339: Atlantic Canada 902 435 9899: NL 709 747 7650

Model "R" End Seals are available in five (5) different sizes to accommodate a wide range of carrier/casing diameter combinations. A unique "cone" design, with molded-in dimensions are easily cut to size for a correct fit on the carrier pipe.

Model "S" Standard Pull-on End Seals Energy Market



Model "S" Standard Pull-on End Seals are flexible and easily installed on Nominal Steel & IPS casing/carrier pipe combinations. PSI Model "S" end seals are extremely robust, resistant to wide variations in environmental conditions while eliminating the possibility of foreign material entering the opening between carrier and casing pipes.

**PSI Canadian Distributor
POWER PLANT SUPPLY CO
ONTARIO/Quebec: 416 752 3339
Atlantic Canada: 902 435 9899
NL: 709 747 7650**

Power Plant Supply Co has convenient shipping warehouse locations in Canada, to serve customers in Ontario, ON, Quebec, QC, Atlantic Canada, including New Brunswick, NB, PEI, Nova Scotia, NS, Newfoundland & Labrador, NL, British Columbia, BC, Alberta, AB, Manitoba, Man, Saskatchewan, SK, Nunavut, Northwest Territories, NWT, Yukon. Next day Air or convenient ground to major cities including Vancouver, Calgary, Edmonton, Fort McMurray, Winnipeg, Yellowknife, Thunder Bay, Hamilton, Toronto, Ottawa, Montreal, Quebec City, Saint John, Moncton, Fredericton, Charlottetown, Halifax, Sydney, Corner Brook, St John's.

See Power Plant Supply Co <http://www.powercanadasolutions.com> for PSI, Link Seals, Wall Sleeves, Casing Spacers, Flange Isolation Kits, Flange Gaskets, Manhole Joint Wrap, Pipe Shrink Wrap, Casing Isolators,

Model "W" Wrap around End Seals Water/Energy Market



Model "W" Wrap around End Seals are designed to accommodate customer supplied specifications so they may be used for any size casing/carrier differential. PSI Model "W" end seals are extremely robust, resistant to wide variations in environmental conditions while eliminating the possibility of foreign material entering the opening between carrier and casing pipes.

Model "FW" Fire Resistant End Seals Energy Market



Model "FW" Fire Resistant End Seals have been developed for applications identified as fire prone areas such as tank farms or pipes passing through fire walls. They are ordered to customer supplied specifications so they may be used for any size casing/carrier differential. These seals are excellent for eliminating the possibility of foreign material entering the opening between carrier and casing pipes.

Casing End Seals - Link-Seal® Modular Seals



Link-Seal® Modular Seals - with Reinforced Centering Blocks

For Double Sealing Pipeline Casing Ends when Carrier Pipe is centered in Casing

A Link-Seal® modular seal assembly installed at each end of pipeline casings provides positive, hydrostatic protection against the entry of water, soil or other backfill materials and reduces corrosion and ice damage. If casing isolators are not used, starting with 14" diameter assemblies, we suggest Link-Seal® modular seals with "centering blocks" in 25% of the links. These centering blocks fit into moulded openings in the Link-Seal® modular seals and are positioned in the lower 90° of each assembly. PSI centered casing isolators should also be placed within two feet of casing ends.